

St. Thomas Parish 1954





HIS EXCELLENCY
THE MOST REVEREND EDMOND J. FITZMAURICE, D. D.
Bishop of Wilmington



DIocese OF WILMINGTON

CHANCERY OFFICE
1301 DELAWARE AVENUE
WILMINGTON 6, DELAWARE

March 20, 1954

TO THE DEVOTED MEMBERS OF SAINT THOMAS' PARISH,
WILMINGTON, DELAWARE

My dear People:

Your pastor, Father Edward McAteer, informs me you are undertaking to raise \$250,000 towards the erection of a new school building where all the children of the parish may receive an education in a building adequate in size and modern in equipment.

This is indeed good news, and I hasten to congratulate you on your splendid initiative, and your spiritual discernment. You owe it to your children to give them a Christian as well as a secular education. Under present conditions in your parish, you can do this only by building for them such a school as you contemplate where they will be properly taught each day, not alone to serve this world and gain such lawful prizes as it may offer, but-what is infinitely more important-to serve God, and to gain His prize, which is eternal life.

You could not possibly engage in a finer, and indeed more necessary project than this. From my heart, I commend it unreservedly to every one of your number, and I urge all parishioners without distinction to take an active part in the campaign now being inaugurated, and to do their utmost to make it a success.

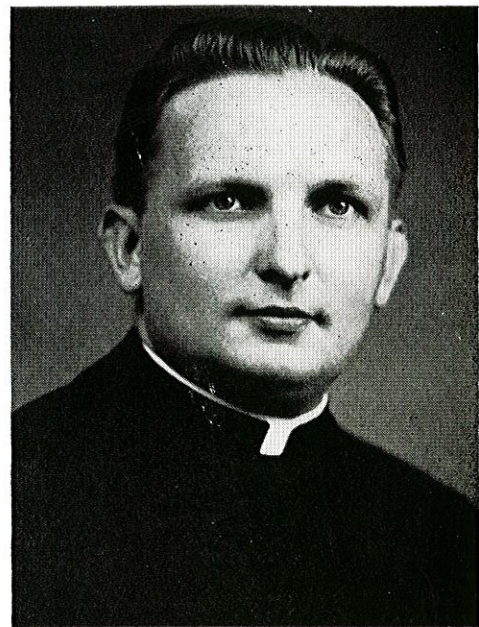
In the meantime, invoking upon all, and especially the campaign workers and contributors, the blessing of Almighty God, I am

Yours sincerely in Christ,

Edmond J. FitzMaurice
Bishop of Wilmington



REV. EDWARD A. McATEER
Pastor



REV. GREGORY M. PIEKOS
Assistant

ST. THOMAS' CHURCH

NEW SCHOOL BUILDING FUND APPEAL

301 North Baneroff Parkway

Phone 8-4013

Wilmington, Delaware

Honorary Chairman

REV. EDWARD A. McATEER

Honorary Co-Chairman

REV. GREGORY M. PIEKOS

March 20, 1954

General Chairman

JAMES E. SULLIVAN

My Dear Parishioners:

General Co-Chairmen

WILLIAM J. BOECK
LEROY A. DESMOND
JOSEPH P. SCHAAL

We have just finished celebrating the fiftieth anniversary of Saint Thomas' Parish. It has been for us all an occasion to look back, to look about and to look forward in terms of growth of the Church in these parts.

Survey Committee

THOMAS ALEXANDER
JOHN BIEBEL
FRANK DOHERTY
FRANCIS FITZPATRICK
FRANCIS HAUGH
CHARLES O'BRIEN

The growth of the Church of Christ is measured not only in numbers, but in the quality and the intensity of the faith of its members. In Saint Thomas' Parish from the beginning this faith of its members has been a fervant one, which has shown itself both in the prayerful spirit of our people and in the good works they perform in God's name.

We have come at the present moment to an historic point in the growth of Saint Thomas' Parish. We must face the challenge which our growth in numbers poses for us, and be certain that we lose nothing of the intimate sense which has bound the members of this parish together. We must meet the opposition of the worldly spirit which rob us of our faith. These we can best do together in our common prayer and in our work for the future, which means the children of today.

The need of our New Grade School is one which is familiar to us all. What we must establish for ourselves is that we are sufficiently convinced of this need to give to the point of sacrifice to meet it. May we hope the cooperation of every parishioner is assured that we may build together the walls of the city of God-that we may build for the future-today.

Gratefully yours in Christ,

Rev. Edward A. McAteer

Pastor

Saint Thomas' Parish

50 Years of Progress
1903—1953

Crowning Fifty Years of Progress
with a
New Parochial School

“WHEN WE BUILD, let us think that we build together. Let it not be for present delight, nor for present use alone; let it be such work that our decedents will thank us for, and let us think, as we lay stone on stone, that a time is to come when those stones will be held sacred, because our hands have touched them, and that men will say as they look upon the labor and wrought substance of them. See, this our fathers did for us.”—JOHN RUSKIN.

- 1952—Rev. Edward A. McAteer was appointed pastor.
- 1950—Father Brennan passes away.
- 1945—Rev. Patrick A. Brennan becomes new pastor.
- 1942—The New Convent Cornerstone-Laying.
- 1941—Installation of New Church Tower Bell.
- 1938—Installation of New Pipe Organ.
- 1928—Formal Opening of New and Our Present Church.
- 1925—Rev. John N. Dougherty appointed our new pastor.
- 1925—Father Connelly suddenly passes away.
- 1911—The present Rectory Building was constructed.
- 1903—Mission School officially opens with arrival of four Franciscan Sisters.
- 1903—Rev. John J. Connelly becomes the first pastor.
- 1903—Saint Thomas' Parish is established.

One Man Alone

ONE man alone could not build a city or a railroad. One man alone would find it hard to build a house or bridge. That we may have bread, men have sowed and reaped, men have made plows and threshers, men have built mills and mined coal; men have made stoves and kept store. Thus it has ever been; as we learn to work together, the interest and welfare of all are advanced.

“Shoulder to shoulder” is a maxim men have used for ages to call forth the cooperation of their fellow men. Ever since man established common habitats, began giving expression to the social instinct by living in communities, he has learned the wisdom, importance and necessity of working with and for each other.

The problem with which this parish is faced is one that cannot be solved by “one man alone.” If it could, it would not be the right way. There isn’t a Catholic in this community who would willingly have one of a few people solve the problem of providing for the New School of Saint Thomas Parish.

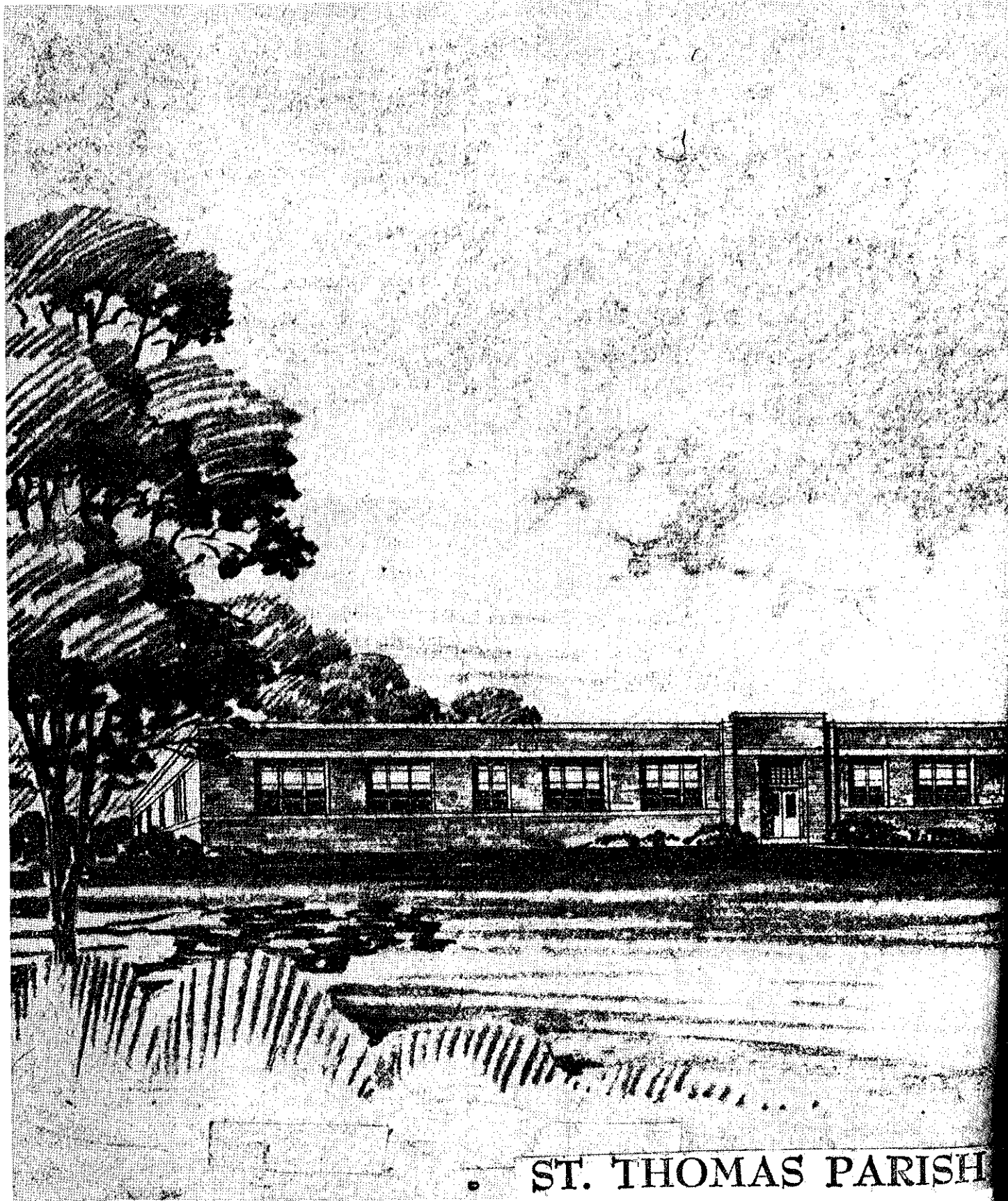
In erecting the New School, our priests and people are marching in step with the

greatest need of our day. It is not only imperative that we have religious freedom, but that we have parishes adequate to our needs and free of debt, Churches and Schools that we can be proud of and in which we can give expression to such freedom of worship of God as we have been taught for twenty centuries.

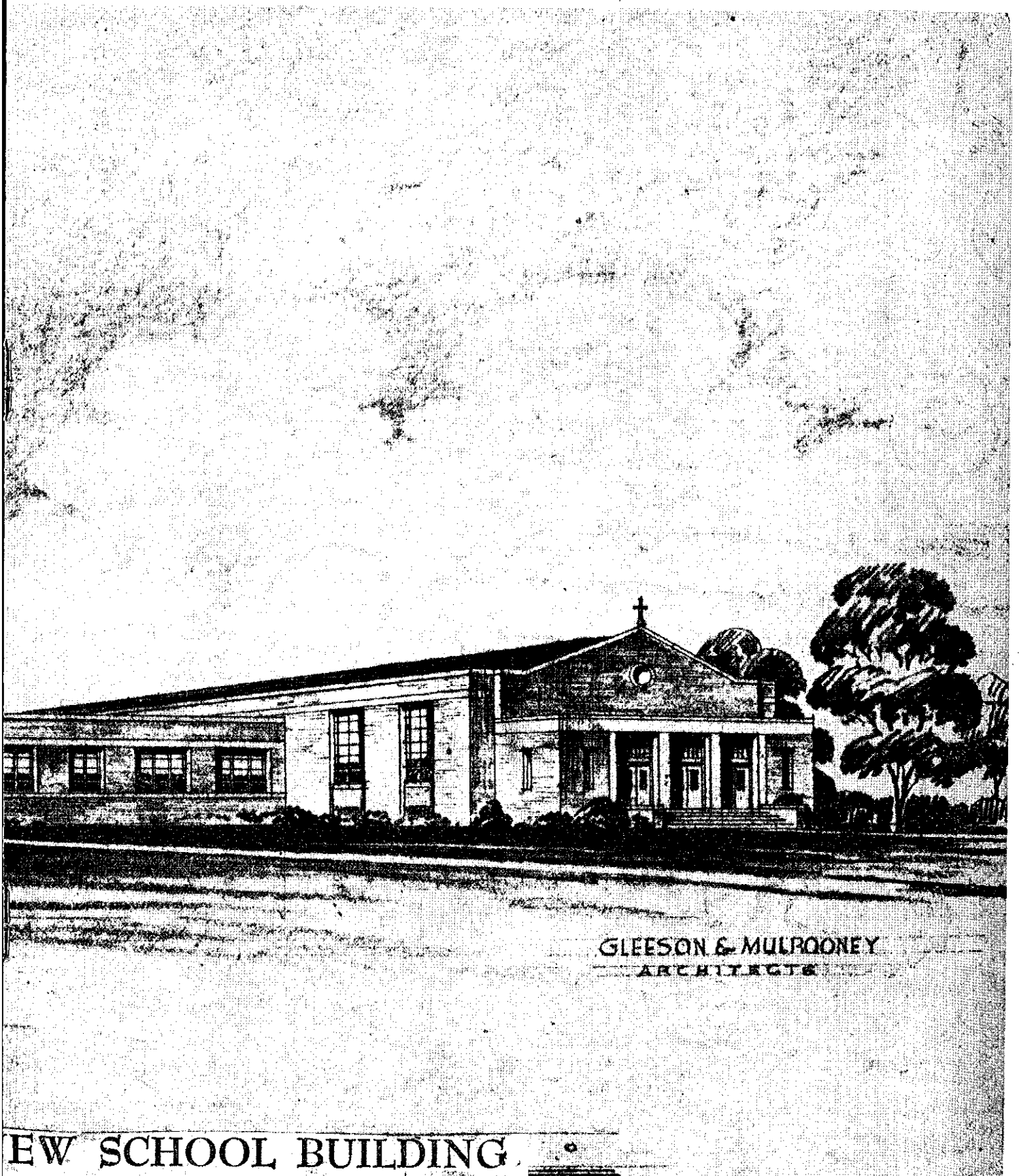
Catholic training is the portal not only to right living and thinking, but to strong leadership. There would be less misunderstanding among men and nations if all, in the language of St. Paul could “Give a reason for the faith that is in them,” and know more of the Church and its achievements.

When all the facts are weighed, the New School of Saint Thomas Parish is not an expense. It is . . . rather an investment.

“Shoulder to shoulder” is the challenge echoing through this community, calling men and women to give of their substance and to render such measure of service as will provide for an institution which shall bring material and spiritual blessings to those here and yet to come.



• ST. THOMAS PARISH



GLEESON & MULROONEY
ARCHITECTS

NEW SCHOOL BUILDING

A Day's Pay a Month from All

OBVIOUSLY it is impossible for Father McAteer to see every member of the parish. Nevertheless it is important that all be conscious of the sacrifice each one of us must make if the present New School Building Fund Appeal is to succeed. This brochure, consequently, is sent to you in lieu of a personal visit from our Pastor.

Whether you know it or not, even whether you like it or not, the fact of the matter is that in regard to this campaign you are vitally important. As an individual you are known and respected in the parish, and what you do in this matter will be noted by your fellow parishioners. What you do may even set the standard of giving for the entire parish. If you fail to do your part, others may see in your failure an excuse for them to reject this appeal. Some of them may gladly fail. But if you lead, they will follow to a successful conclusion of the Appeal. Thus You Set The Standard.

The New School Building Fund Appeal committee have determined that it will take at least a day's pay a month for the next thirty months from each member of the parish to do the job. Is this too much to ask so that St. Thomas' Parish can meet its needs? Will you consequently give at least a day's pay a month for the next thirty months? If

you do this, our New School Building Fund Appeal will succeed.

Surely you are sufficiently acquainted with Business to understand that our parish now takes on the role of Big Business. As the years go on it will become bigger and even bigger business. What we of St. Thomas' Parish do today will have a lot to do with the salvation of souls tomorrow and the next day. We are privileged, burdened if you will, but none the less privileged with the task of setting the mold of the future. This is a time when we must be big, generous, understanding, and make a sacrifice in the present for the welfare of the future.

Remembering this, remember also that the theme of our New School Building Fund Appeal is, **AT LEAST A DAY'S PAY A MONTH FOR THIRTY MONTHS.**

This is a challenge. It is a challenge which comes to us here and now, and one in which each of us must lose sight of himself, must envision this program of building as one for God and the Holy Mother Church, and give lovingly and with sacrifice that the St. Thomas' Parish will be able to make improvements. For a project of this kind, even the poorest among us, by sacrifice, can afford at least 35c per day for the 30 month period.

Time of Decision

WITHIN THE NEXT FEW DAYS a fellow parishioner will call upon each of us with a request that we make our pledge to the Saint Thomas New School Building Fund Appeal.

LET US RECEIVE him graciously and consider his message carefully. He is one of several hundred men who have volunteered their time and services, as well as their material substance, to help assure us that our parish will not be overburdened with debt.

THE VISITOR already will have made his gift to the School Fund. He will have answered for himself the questions which may be in your minds, and he will gladly answer them for you.

THIRTY MONTHS covers parts of three income tax years, namely, 1954, 1955, and 1956, and enables the donor to deduct the amount of his giving from taxable income, up to the 20% provided by law.

WE HAVE BEEN FAVORED with God's blessings, and most of us have the good things of life. To return some of that in simple christian gratitude is the least we can do. All it takes is some manly sacrifice and discipline.

IT IS FROM SUCH SACRIFICE AND UNITED EFFORT that strength comes. It is such strength that will give us a Great School and Sound Children, strong in their Faith and resources for life.

With God's Grace We Will Succeed

The Precious Gift of Memory

DEEP in man's nature is the will to live forever. This desire to live, not only in the world to come but here on earth, has prompted men to leave something behind them that will bind them forever to the people and the scenes they loved.

Some erect monuments of marble and granite to perpetuate their memory. Others leave their wealth to endow hospitals, or build libraries or public buildings so that all who pass may read the record of their earthly success.

But the spiritual man, knowing the emptiness of mere earthly memorials, chooses rather those which, like his own soul, will live for God's glory.

A Catholic School is such a living memorial. It leads to the very sources of spiritual life. People who build them are "wise

men" indeed. The good they do is not interred with them—it remains, joined to the undying life of God Himself, made part of the fulfillment of the Divine plan on earth. They who build a Church School live on, even when the night has come wherein no man may labor.

It is not likely that you will have this opportunity again. Most of us are called upon but once to make such an outstanding sacrifice for God's work.

Let not anxiety for tomorrow prevent you from pledging yourself to this task. God, Who has provided so abundantly for us all, will not be unmindful of our faith and trust in Him. We are confident that He will give you the means to do all that you desire to do for Him, to make here a Memorial that will live and labor in your name so long as this parish stands.



Memorials that Live

HEREIN appears a list of SACRED AND OTHER FURNISHINGS which are in our New School. After each item, a sum of money is designated. In some instances, that amount is below contract price. In other cases, there has been added to the basic cost, a proportionate amount to bear

the cost of creating the superstructure which houses your GIFT. Hence you will enjoy a TWOFOLD PRIVILEGE: An especially chosen FURNISHING and a share in the OUTER SHELL of the School.

Provision will be made to insure the inscription of your name as DONOR.

Special School Memorials

Auditorium	\$10,000.00
Main Corridor	\$ 5,000.00
Main Lobby	\$ 2,500.00
Blessed Virgin Sodality Meeting Room	\$ 1,500.00
Holy Name Meeting Room	\$ 1,500.00
Main Entrance Doors (2 memorials) each	\$ 1,000.00

General New School Memorials

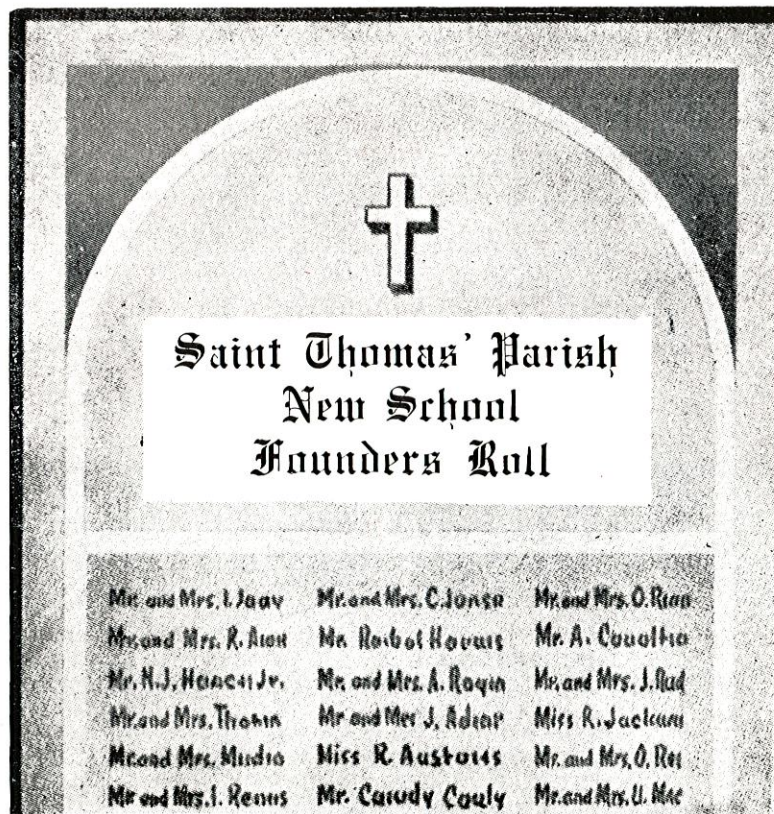
Classroom No. 1	\$ 1,000.00
Classroom No. 2	\$ 1,000.00
Classroom No. 3 (2 memorials) each	\$ 750.00
Classroom No. 4 (2 memorials) each	\$ 750.00
Classroom No. 5 (2 memorials) each	\$ 750.00
Classroom No. 6 (4 memorials) each	\$ 450.00
Classroom No. 7 (4 memorials) each	\$ 450.00
Classroom No. 8 (4 memorials) each	\$ 450.00
Classroom No. 9 (4 memorials) each	\$ 450.00
Classroom No. 10 (4 memorials) each	\$ 450.00
Classroom No. 11 (4 memorials) each	\$ 450.00
Classroom No. 12 (4 memorials) each	\$ 450.00
Classroom No. 13 (4 memorials) each	\$ 450.00
Classroom No. 14 (4 memorials) each	\$ 450.00
Saint Agnes Statue	\$ 750.00
Saint Aloysius Statue	\$ 750.00
Rear Entrance Doors (2 memorials) each	\$ 600.00
Rear Entrance Lobby (2 memorials) each	\$ 600.00
Sister's Desk (14) each	\$ 540.00
Classroom Crucifix (14) each	\$ 400.00
Classroom Blessed Mother Statue (14) each	\$ 400.00
Classroom Windows (each room) (14) each	\$ 360.00
Classroom Equipment (each room) (14) each	\$ 360.00
Pupil's Desk each	\$ 360.00

**Remember — Only 40c per day on your pledge
Entitles — You — to a Memorial**

We, the Founders

WE, the founders of Saint Thomas' New School, through our contributions to this project, shall be able to look with pride upon our work and accomplishments. We shall derive much satisfaction from knowing that when our Parish was in need, we rallied to the cause through the dictates of our conscience, and by so doing

made worthy use of the means God gave us. In the future, when we pass Saint Thomas' New School, we can take just pride in the fact that it was we, and people like us, who made possible such a splendid institution. Our hope and need now may be realized if all cooperate in this campaign.



Parish School Founders Roll

Recognizing that in any circumstances there will not be sufficient memorials in the new project to gratify the wishes of all, we have established the Parish New School Founders Roll for all those subscribing \$300.00 or more.

A pledge of \$300.00 is less than 35c per day over the 30 month period. The names of individuals or families subscribing \$300.00 or more will be inscribed on a Bronze Memorial Tablet to be erected in the school.

Saint Thomas' Parish New School Building Fund Appeal

MINIMUM NEED — \$250,000

YOUR CAMPAIGN WORKERS

Honorary Chairman REV. EDWARD A. McATEER
Honorary Co-Chairman REV. GREGORY M. PIEKOS
General Chairman JAMES E. SULLIVAN
General Co-Chairman JOSEPH P. SCHAAL
General Co-Chairman LEROY A. DESMOND
General Co-Chairman WILLIAM J. BOECK

SURVEY COMMITTEE

THOMAS ALEXANDER	FRANCIS FITZPATRICK
JOHN BIEBEL	FRANCIS HAUGH
FRANK DOHERTY	CHARLES O'BRIEN

DIVISION LEADERS

HERBERT KIPP	FRANCIS DeFRANCIS	SAMUEL IRELAND
EDWARD PUSEY	PAUL MURRAY	DAVID JACOBI
JAMES JONES	GEORGE RASH	EDWARD HARRINGTON
JOSEPH McCOLLUM	ALFRED GIAMPIETRO	JOHN FITZPATRICK
WILLIAM SOWDEN	ALFRED COLOMBO	JOHN DANIELS
RALPH MILLER	WILLIAM KIRK	EDWARD BUDYNKIEWICZ
JOSEPH BACON		JOHN SWEENEY

God Builds No Schools

God builds no schools! by His plan
The labor has been left to man.
No walls miraculously rise,
No halls or rooms from the skies
Fall on a bleak barren place
To be a home of truth and grace.
The humblest school demands its price,
In human toil and sacrifice.

Men call the school a path to God
O'er which the souls of Children trod
In search of trust and love and hope
As blindly through life's mist they grope
To where God dwells, but it is man
Who builds the school and draws the plan,
Pays for the mortar and the stone,
That none may die with God unknown.